

# Murano

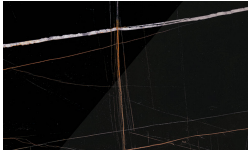
???????



Calacatta

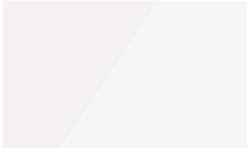


Amani



Sahara

????????????????



???????? Bianco



???????? Seta



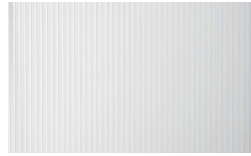
???????? Roccia



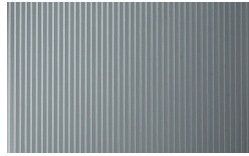
???????? Piombo

???????

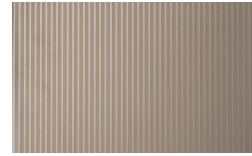
**PIANCA**



Rigato Argento —



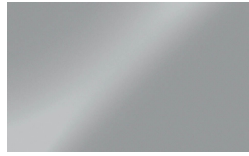
Rigato Piombo —



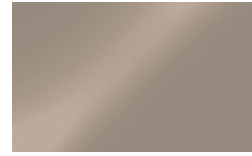
Rigato Bronzo —



Trasparente Argento —



Trasparente Piombo —



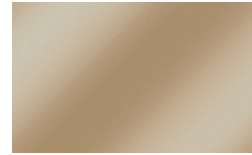
Trasparente Bronzo —



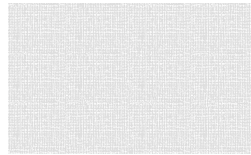
Riflettente Argento —



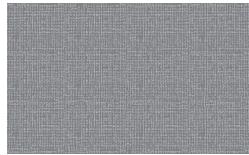
Riflettente Piombo —



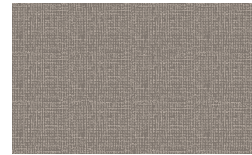
Riflettente Bronzo —



Trama Argento —



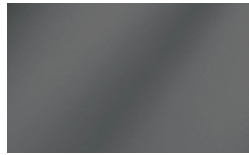
Trama Piombo —



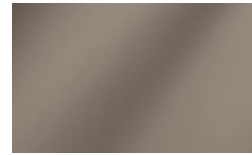
Trama Bronzo —



Metallizzato Argento



Metallizzato Piombo



Metallizzato Bronzo

???????



Bronzo



Piombo



Argento

?????

???????



Rigato Argento —



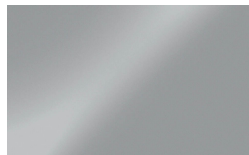
Rigato Piombo —



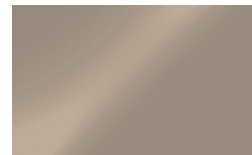
Rigato Bronzo —



Trasparente Argento —



Trasparente Piombo —



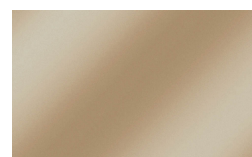
Trasparente Bronzo —



Riflettente Argento —

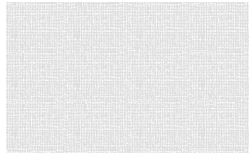


Riflettente Piombo —



Riflettente Bronzo —

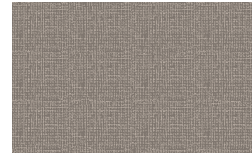
# PIANCA



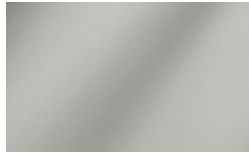
Trama Argento —



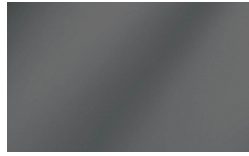
Trama Piombo —



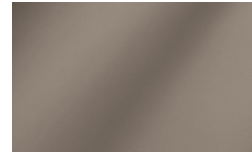
Trama Bronzo —



Metallizzato Argento



Metallizzato Piombo



Metallizzato Bronzo

???????? ?



Palladio



Canna di Fucile



Duna 804 Lavagna

???????? ? Duna



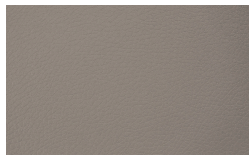
Duna 801 Bianco



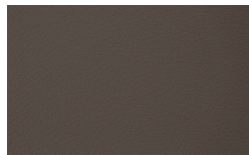
Duna 802 Seta



Duna 916 Cashmere



Duna 917 Ecrù



Duna 918 Fango



Duna 919 Espresso



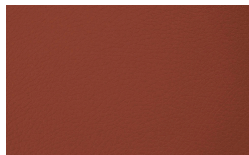
Duna 914 Nebbia



Duna 923 Cipria



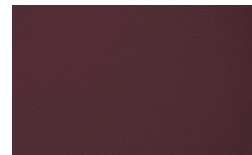
Duna 922 Miele



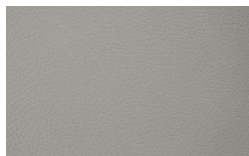
Duna 924 Mattone



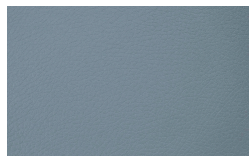
Duna 926 Tabasco



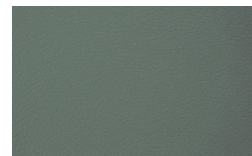
Duna 927 Malva



Duna 921 Roccia



Duna 928 Avio



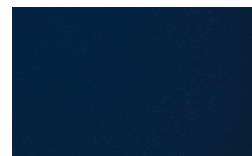
Duna 933 Onice



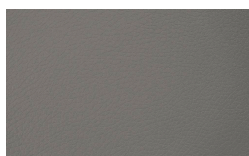
Duna 920 Bosco



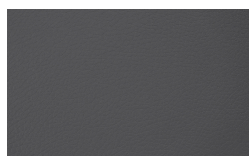
Duna 929 Mirto



Duna 930 Oceano



Duna 803 Cenere



Duna 915 Piombo

**PIANCA**

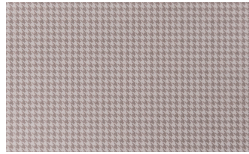


Duna 931 Nero

????????? ??????????  
?????????



522 Borgogna



501 Bon Ton



520 Larice Tortora



518 Noce Dorato



Perlage Conchiglia

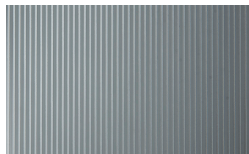


Perlage Terra

????????????? ??????????  
?????????



Rigato Argento —



Rigato Piombo —



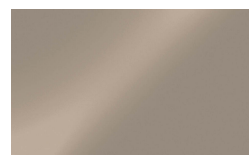
Rigato Bronzo —



Trasparente Argento —



Trasparente Piombo —



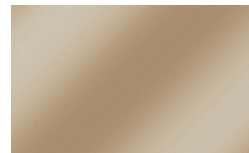
Trasparente Bronzo —



Riflettente Argento —



Riflettente Piombo —



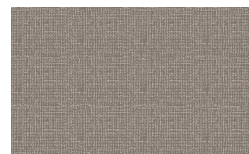
Riflettente Bronzo —



Trama Argento —



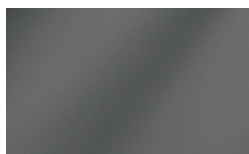
Trama Piombo —



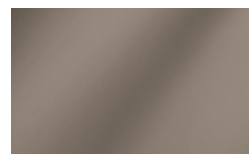
Trama Bronzo —



Metallizzato Argento

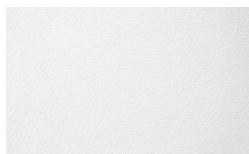


Metallizzato Piombo

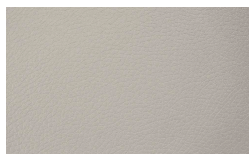


Metallizzato Bronzo

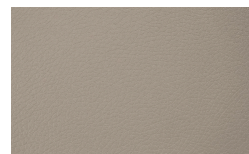
????????? ?????????? Duna



Duna 801 Bianco



Duna 802 Seta



Duna 916 Cashmere

# PIANCA



Duna 917 Ecrù



Duna 918 Fango



Duna 919 Espresso



Duna 914 Nebbia



Duna 923 Cipria



Duna 922 Miele



Duna 924 Mattone



Duna 926 Tabasco



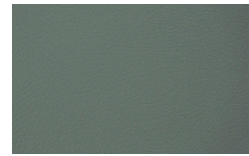
Duna 927 Malva



Duna 921 Roccia



Duna 928 Avio



Duna 933 Onice



Duna 920 Bosco



Duna 929 Mirto



Duna 930 Oceano



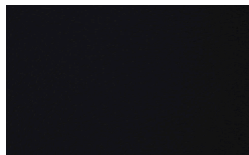
Duna 803 Cenere



Duna 915 Piombo



Duna 804 Lavagna

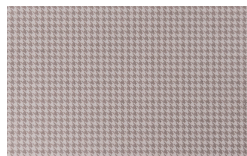


Duna 931 Nero

????????? ??????????  
 ????????



522 Borgogna



501 Bon Ton



520 Larice Tortora



518 Noce Dorato



Perlage Conchiglia



Perlage Terra

\* Opaco o Lucido, <sup>EN</sup> Matt or High Gloss  
 \*\* Solo per telaio anta Milano, <sup>EN</sup> Only for Milano door frame  
 ° Alaska Laccato, <sup>EN</sup> Lacquered Alaska

**PIANCA**

**PIANCA**

# PIANCA

Via dei Cappellari, 20  
31018 – Gaiarine, Treviso  
ITALY  
T +39 0434 756911  
F +39 0434 75330  
info@pianca.com  
pianca.com  
p.iva IT 01682580269

Vietata la riproduzione a qualsiasi scopo.  
Campione promozionale gratuito non destinato alla vendita.  
Escluso iva art.2 comma 3 D.P.R. 633/72 — esonerato da documento di trasporto art.4 punto 6 D.P.R. 627/78  
Pianca si riserva di apportare, senza preavviso, le modifiche necessarie al fine di migliorare il funzionamento e la qualità dei propri prodotti.  
Si prega di consultare i listini e relativi aggiornamenti per aspetti tecnici e dimensionali. Colori e materiali hanno valore puramente rappresentativo.  
EN Pianca reserves the right to apply the necessary modifications without notice, in order to improve the performance and quality of its products.  
Please see the pricelists and relevant updates for technical data and dimensions. Colours and materials serve merely as an example.