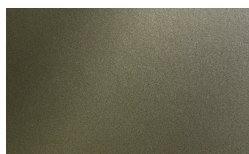


# Kyoto

Designer  
**Simone Bonanni**

?????? ? ??????? ???????  
????????????????????  
???????????



110 Oliva

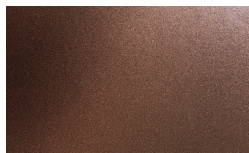


115 Bosco

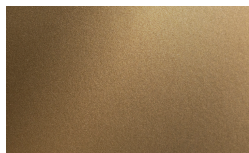


120 Mirto

# PIANCA



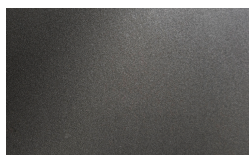
130 Cognac



135 Bronzo

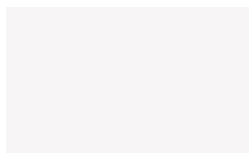


138 Champagne

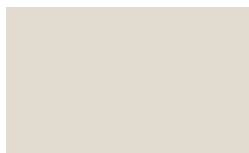


150 Titanio

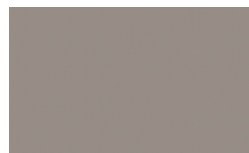
???????? ??????????



Bianco



Seta



Ecrù



Corda



Crema



Cotto



Moka



Fango



Cipria



Mattone



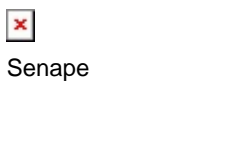
Cannella



Malva



Salvia



 Senape



Orzo



Muschio



Polvere



Indaco



Ardesia



Bosco



Cenere

PIANCA

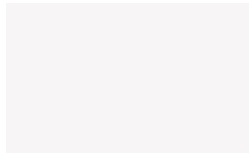


Lavagna



Nero

?????????? ??????????



Bianco



Seta



Ecrù



Corda



Crema



Cotto



Moka



Fango



Cipria



Mattone



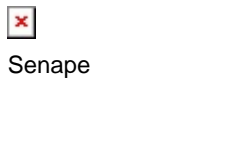
Cannella



Malva



Salvia



Senape



Orzo



Muschio



Polvere



Indaco



Ardesia



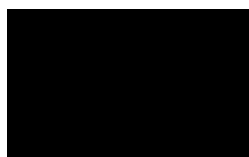
Bosco



Cenere



Lavagna



Nero

?????? ??????

**PIANCA**



Borgogna



Canaletto



Frassino Lino



Frassino Miele



Frassino Moro

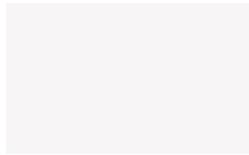


Frassino Antracite

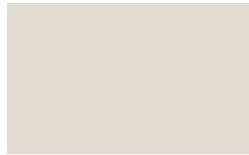


Frassino Nero

?????? ????  
?????? ????????



Bianco



Seta



Ecrù



Corda



Crema



Cotto



Moka



Fango



Cipria



Mattone



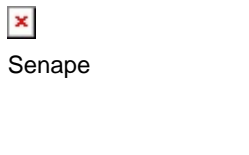
Cannella



Malva



Salvia



 Senape



Orzo



Muschio



Polvere



Indaco

# PIANCA



Ardesia



Bosco



Cenere



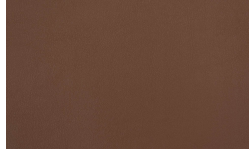
Lavagna



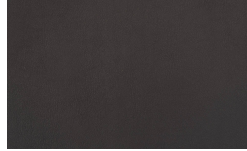
Nero

???????????????? ???? ?

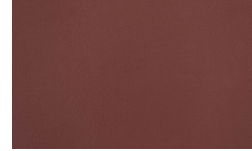
Extrema AU



Extrema AU 12



Extrema AU 13



Extrema AU 10



Extrema AU 21

\* Opaco o Lucido, <sup>EN</sup> Matt or High Gloss  
\*\* Solo per telaio anta Milano, <sup>EN</sup> Only for Milano door frame  
° Alaska Laccato, <sup>EN</sup> Lacquered Alaska

**PIANCA**

**PIANCA**

# PIANCA

Via dei Cappellari, 20  
31018 – Gaiarine, Treviso  
ITALY  
T +39 0434 756911  
F +39 0434 75330  
info@pianca.com  
pianca.com  
p.iva IT 01682580269

Vietata la riproduzione a qualsiasi scopo.  
Campione promozionale gratuito non destinato alla vendita.  
Escluso iva art.2 comma 3 D.P.R. 633/72 — esonerato da documento di trasporto art.4 punto 6 D.P.R. 627/78  
Pianca si riserva di apportare, senza preavviso, le modifiche necessarie al fine di migliorare il funzionamento e la qualità dei propri prodotti.  
Si prega di consultare i listini e relativi aggiornamenti per aspetti tecnici e dimensionali. Colori e materiali hanno valore puramente rappresentativo.  
EN Pianca reserves the right to apply the necessary modifications without notice, in order to improve the performance and quality of its products.  
Please see the pricelists and relevant updates for technical data and dimensions. Colours and materials serve merely as an example.