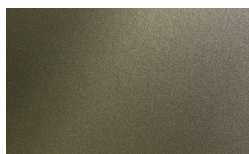


Atlante

?????? ? ??????? ???????
????????????????????
???????????



110 Oliva

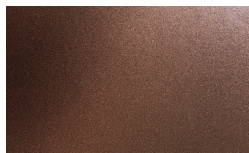


115 Bosco

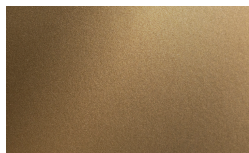


120 Mirto

PIANCA



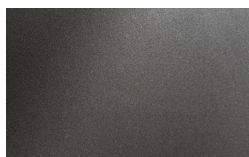
130 Cognac



135 Bronzo

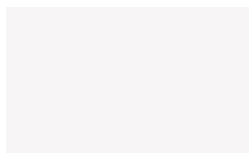


138 Champagne

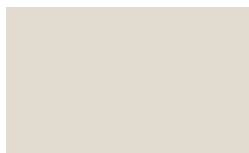


150 Titanio

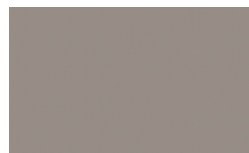
???????? ??????????



Bianco



Seta



Ecrù



Corda



Crema



Cotto



Moka



Fango



Cipria



Mattone



Cannella



Malva



Salvia



Senape



Orzo



Muschio



Polvere



Indaco



Ardesia



Bosco



Cenere

PIANCA

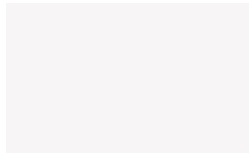


Lavagna



Nero

?????????? ??????????



Bianco



Seta



Ecrù



Corda



Crema



Cotto



Moka



Fango



Cipria



Mattone



Cannella



Malva



Salvia



Senape



Orzo



Muschio



Polvere



Indaco



Ardesia



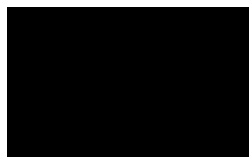
Bosco



Cenere



Lavagna



Nero

?????? ??????

PIANCA



Borgogna



Canaletto



Frassino Lino



Frassino Miele



Frassino Moro



Frassino Antracite



Frassino Nero

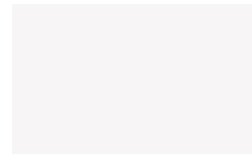
????????? ???????



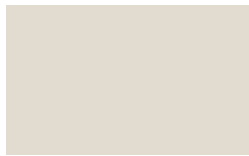
518 Noce Dorato



519 Frassino Sabbia



Materico Bianco



Materico Seta



Materico Ecrù



Materico Cenere

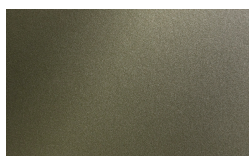


523 Vinile

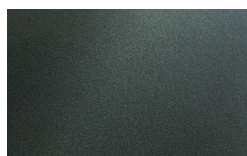
????????? ????????? ? ????????????

???????????????????????

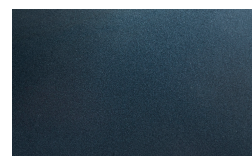
???????????



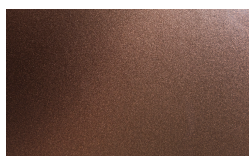
110 Oliva



115 Bosco



120 Mirto



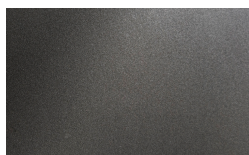
130 Cognac



135 Bronzo



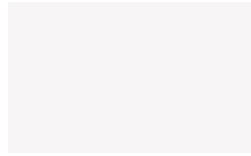
138 Champagne



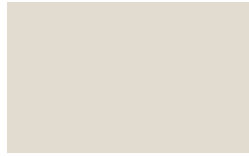
150 Titanio

PIANCA

???????? ?



Bianco



Seta



Ecrù



Corda



Crema



Cotto



Moka



Fango



Cipria



Mattone



Cannella



Malva



Salvia



Senape



Orzo



Muschio



Polvere



Indaco



Ardesia



Bosco



Cenere



Lavagna

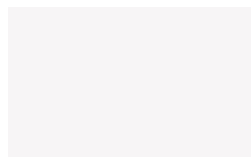


Nero

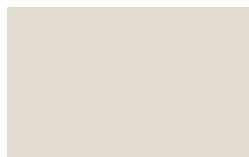


Bianco

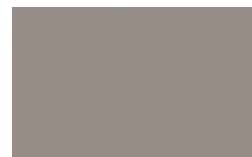
???????? ?



Bianco



Seta

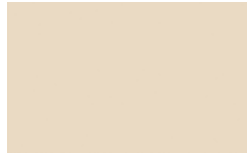


Ecrù

PIANCA



Corda



Crema



Cotto



Moka



Fango



Cipria



Mattone



Cannella



Malva



Salvia



Senape



Orzo



Muschio



Polvere



Indaco



Ardesia



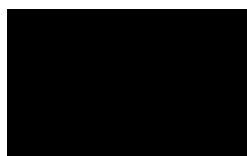
Bosco



Cenere

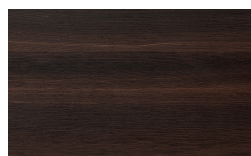


Lavagna

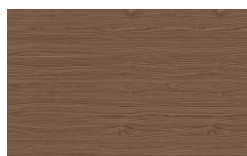


Nero

?????? ??????



Borgogna



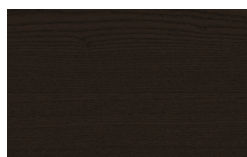
Canaletto



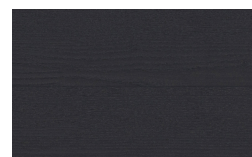
Frassino Lino



Frassino Miele



Frassino Moro



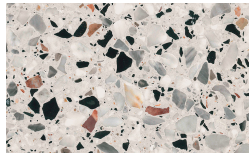
Frassino Antracite

PIANCA

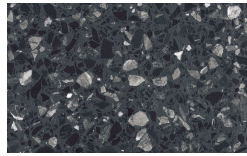


Frassino Nero

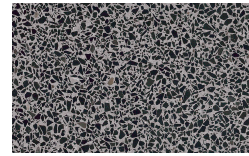
Terrazzo



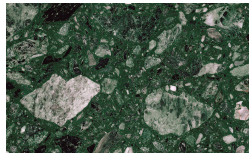
Arlecchino



Balanzone

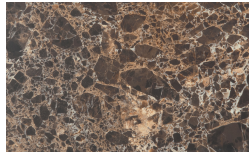


Rugantino



Farinella

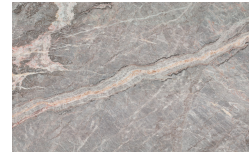
??????



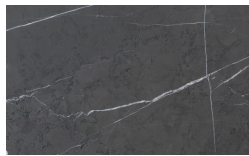
Emperador



Gioia di Carrara



Fior di Pesco

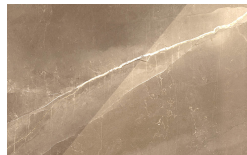


Grafite

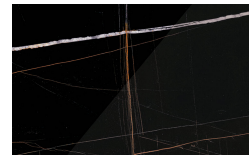
?????????? ???? ?



Calacatta

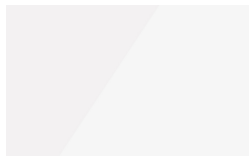


Amani



Sahara

?????????????? ?



???????? Bianco



???????? Seta

??????????????????
??????????????????



???????? 110 Oliva



???????? 115 Bosco



???????? 120 Mirto



???????? 130 Cognac



???????? 135 Bronzo



???????? 138
Champagne

PIANCA

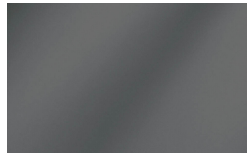


??????? 150 Titanio

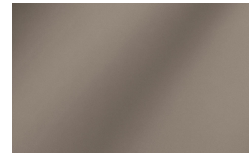
???????



Metallizzato Argento



Metallizzato Piombo



Metallizzato Bronzo

???????



Bronzo



Piombo



Argento

* Opaco o Lucido, ^{EN} Matt or High Gloss

** Solo per telaio anta Milano, ^{EN} Only for Milano door frame

° Alaska Laccato, ^{EN} Lacquered Alaska

PIANCA

PIANCA

PIANCA

Via dei Cappellari, 20
31018 – Gaiarine, Treviso
ITALY
T +39 0434 756911
F +39 0434 75330
info@pianca.com
pianca.com
p.iva IT 01682580269

Vietata la riproduzione a qualsiasi scopo.
Campione promozionale gratuito non destinato alla vendita.
Escluso iva art.2 comma 3 D.P.R. 633/72 — esonerato da documento di trasporto art.4 punto 6 D.P.R. 627/78
Pianca si riserva di apportare, senza preavviso, le modifiche necessarie al fine di migliorare il funzionamento e la qualità dei propri prodotti.
Si prega di consultare i listini e relativi aggiornamenti per aspetti tecnici e dimensionali. Colori e materiali hanno valore puramente rappresentativo.
EN Pianca reserves the right to apply the necessary modifications without notice, in order to improve the performance and quality of its products.
Please see the pricelists and relevant updates for technical data and dimensions. Colours and materials serve merely as an example.