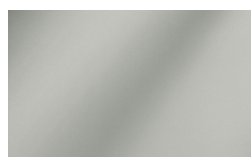


Finiture

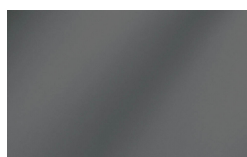
FR Finitions

Milano

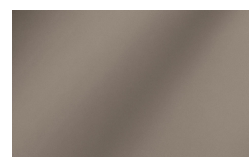
Portes
Verres



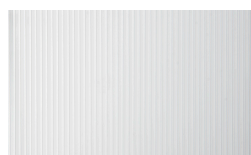
Metallizzato Argento



Metallizzato Piombo



Metallizzato Bronzo



Rigato Argento



Rigato Piombo



Rigato Bronzo

PIANCA

PIANCA



Riflettente Argento



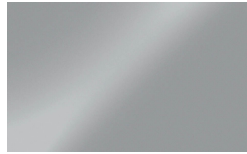
Riflettente Piombo



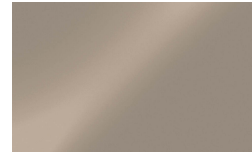
Riflettente Bronzo



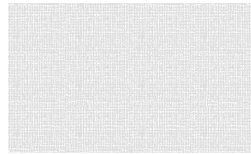
Trasparente Argento



Trasparente Piombo



Trasparente Bronzo



Trama Argento



Trama Piombo



Trama Bronzo

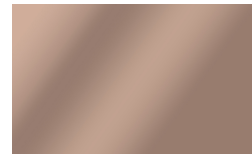
Miroirs



Argento



Piombo



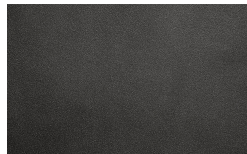
Bronzo

Cadre

Finitions Métal



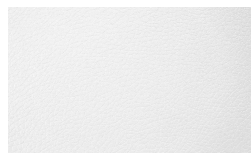
Palladio



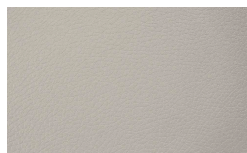
Canna di Fucile

Finitions intérieures

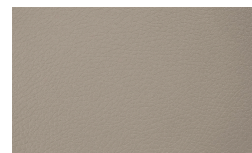
Duna Laqué Mate



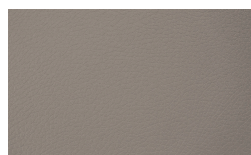
Duna 801 Bianco



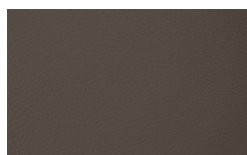
Duna 802 Seta



Duna 916 Cashmere



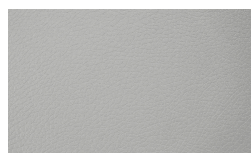
Duna 917 Ecrù



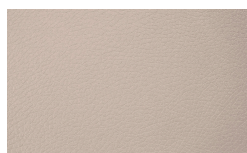
Duna 918 Fango



Duna 919 Espresso



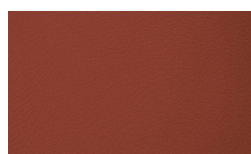
Duna 914 Nebbia



Duna 923 Cipria



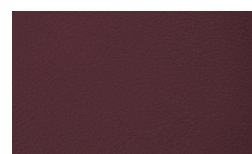
Duna 922 Miele



Duna 924 Mattone

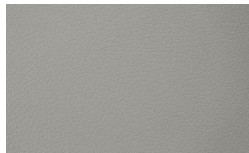


Duna 926 Tabasco

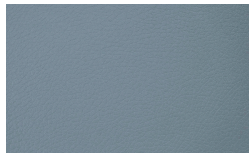


Duna 927 Malva

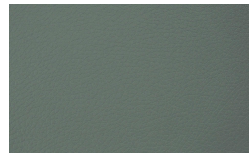
PIANCA



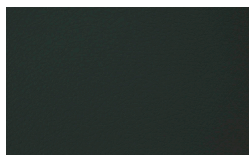
Duna 921 Roccia



Duna 928 Avio



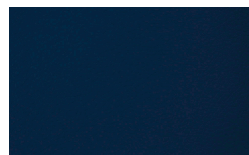
Duna 933 Onice



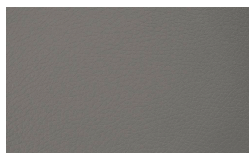
Duna 920 Bosco



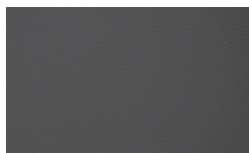
Duna 929 Mirto



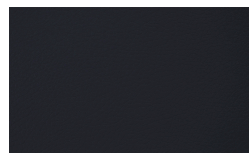
Duna 930 Oceano



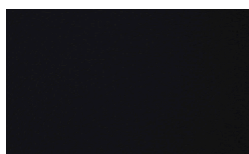
Duna 803 Cenere



Duna 915 Piombo



Duna 804 Lavagna



Duna 931 Nero

Materico Intérieur



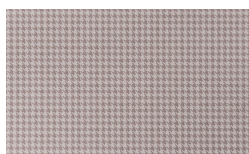
522 Borgogna



518 Noce Dorato



520 Larice Tortora



501 Bon Ton



Perlage Terra



Perlage Conchiglia

* Opaco o Lucido, ^{EN} Matt or High Gloss

** Solo per telaio anta Milano, ^{EN} Only for Milano door frame

° Alaska Laccato, ^{EN} Lacquered Alaska

PIANCA

PIANCA

PIANCA

Via dei Cappellari, 20
31018 – Gaiarine, Treviso
ITALY
T +39 0434 756911
F +39 0434 75330
info@pianca.com
pianca.com
p.iva IT 01682580269

Vietata la riproduzione a qualsiasi scopo.
Campione promozionale gratuito non destinato alla vendita.
Escluso iva art.2 comma 3 D.P.R. 633/72 – esonerato da documento di trasporto art.4 punto 6 D.P.R. 627/78
Pianca si riserva di apportare, senza preavviso, le modifiche necessarie al fine di migliorare il funzionamento e la qualità dei propri prodotti.
Si prega di consultare i listini e relativi aggiornamenti per aspetti tecnici e dimensionali. Colori e materiali hanno valore puramente rappresentativo.
EN Pianca reserves the right to apply the necessary modifications without notice, in order to improve the performance and quality of its products.
Please see the pricelists and relevant updates for technical data and dimensions. Colours and materials serve merely as an example.