

# **Finiture**

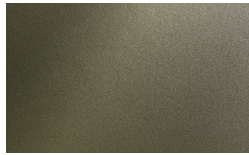
## **EN Finishes**

**Atlante**

# PIANCA

## Structure and Fronts

Metallic Lacquer



110 Oliva



115 Bosco



120 Mirto



130 Cognac



135 Bronzo

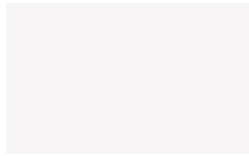


138 Champagne

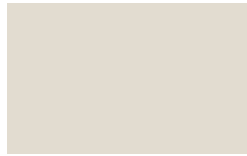


150 Titanio

Matt Lacquered



Bianco



Seta



Ecrù



Corda



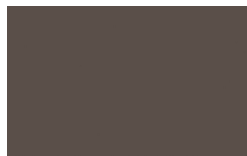
Crema



Cotto



Moka



Fango



Cipria



Mattone



Cannella



Malva



Salvia



Senape



Orzo



Muschio



Polvere



Indaco

# PIANCA



Ardesia



Bosco



Cenere



Lavagna



Nero

High Gloss Lacquered



Bianco



Seta



Ecrù



Corda



Crema



Cotto



Moka



Fango



Cipria



Mattone



Cannella



Malva



Salvia



Senape



Orzo



Muschio



Polvere



Indaco



Ardesia

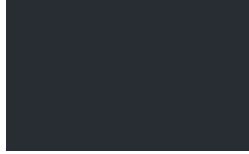


Bosco



Cenere

## PIANCA



Lavagna



Nero

### Woods



Borgogna



Canaletto



Frassino Lino



Frassino Miele



Frassino Moro



Frassino Antracite



Frassino Nero

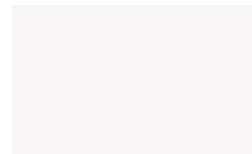
### Materico



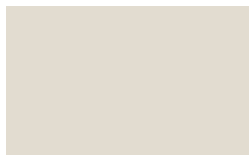
518 Noce Dorato



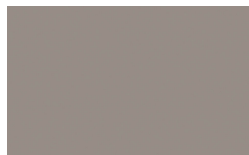
519 Frassino Sabbia



Materico Bianco



Materico Seta



Materico Ecrù



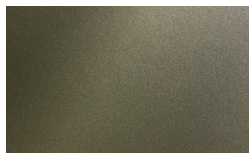
Materico Cenere



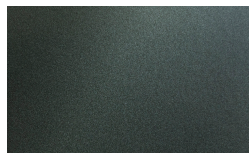
523 Vinile

### Side Trim and Top

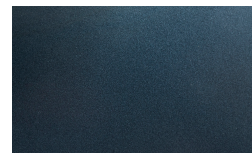
#### Metallic Lacquer



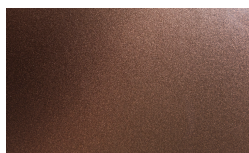
110 Oliva



115 Bosco



120 Mirto



130 Cognac



135 Bronzo



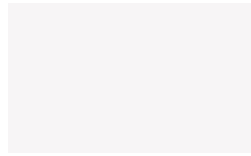
138 Champagne

# PIANCA

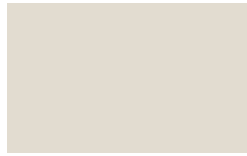


150 Titanio

Matt Lacquered



Bianco



Seta



Ecrù



Corda



Crema



Cotto



Moka



Fango



Cipria



Mattone



Cannella



Malva



Salvia



Senape



Orzo



Muschio



Polvere



Indaco



Ardesia



Bosco



Cenere



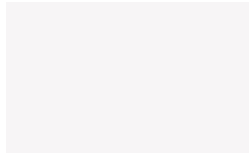
Lavagna



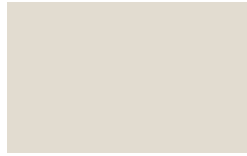
Nero

High Gloss Lacquered

## PIANCA



Bianco



Seta



Ecrù



Corda



Crema



Cotto



Moka



Fango



Cipria



Mattone



Cannella



Malva



Salvia



Senape



Orzo



Muschio



Polvere



Indaco



Ardesia



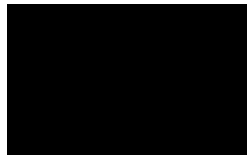
Bosco



Cenere



Lavagna



Nero

## Woods



Borgogna



Canaletto



Frassino Lino

## PIANCA



Frassino Miele



Frassino Moro

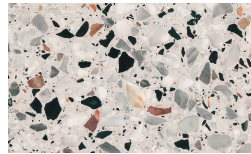


Frassino Antracite

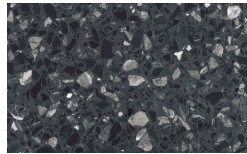


Frassino Nero

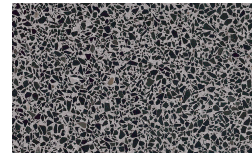
## Terrazzo



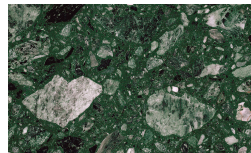
Arlecchino



Balanzone

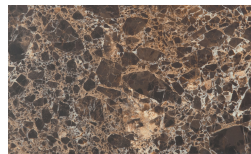


Rugantino

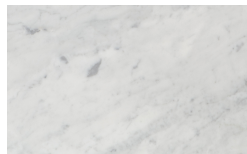


Farinella

## Marbles



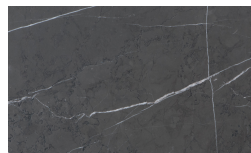
Emperador



Gioia di Carrara



Fior di Pesco

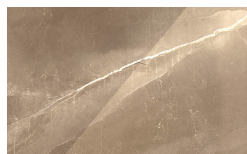


Grafite

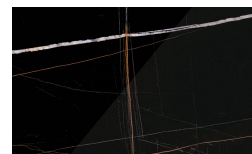
## Marble Glass



Calacatta

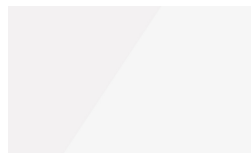


Amani



Sahara

## Lacquered Glass

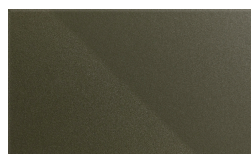


Bianco lacquered

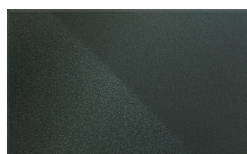


Seta lacquered

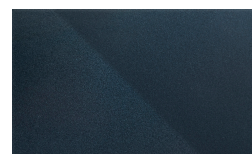
## Metallic Lacquered Glass



110 Oliva lacquered



115 Bosco lacquered

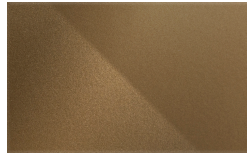


120 Mirto lacquered

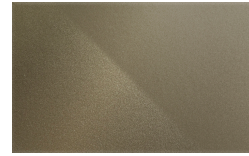
## PIANCA



130 Cognac lacquered



135 Bronzo lacquered

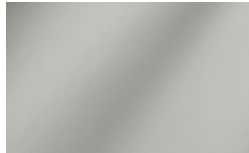


138 Champagne lacquered

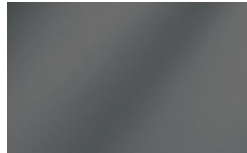


150 Titanio lacquered

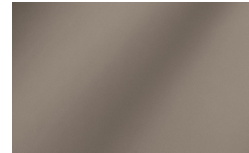
Glasses



Metallizzato Argento



Metallizzato Piombo



Metallizzato Bronzo

Mirrors



Bronzo



Piombo



Argento

\* Opaco o Lucido, <sup>EN</sup> Matt or High Gloss

\*\* Solo per telaio anta Milano, <sup>EN</sup> Only for Milano door frame

° Alaska Laccato, <sup>EN</sup> Lacquered Alaska

**PIANCA**

**PIANCA**

# PIANCA

Via dei Cappellari, 20  
31018 – Gaiarine, Treviso  
ITALY  
T +39 0434 756911  
F +39 0434 75330  
info@pianca.com  
pianca.com  
p.iva IT 01682580269

Vietata la riproduzione a qualsiasi scopo.  
Campione promozionale gratuito non destinato alla vendita.  
Escluso iva art.2 comma 3 D.P.R. 633/72 – esonerato da documento di trasporto art.4 punto 6 D.P.R. 627/78  
Pianca si riserva di apportare, senza preavviso, le modifiche necessarie al fine di migliorare il funzionamento e la qualità dei propri prodotti.  
Si prega di consultare i listini e relativi aggiornamenti per aspetti tecnici e dimensionali. Colori e materiali hanno valore puramente rappresentativo.  
EN Pianca reserves the right to apply the necessary modifications without notice, in order to improve the performance and quality of its products.  
Please see the pricelists and relevant updates for technical data and dimensions. Colours and materials serve merely as an example.